

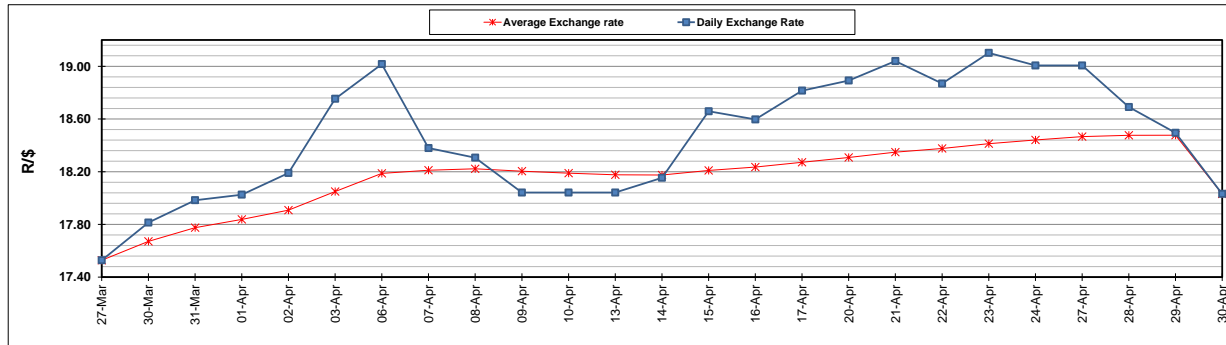
	PETROL 95 ULP	PETROL 93 ULP & LRP	DIESEL 0.05%	DIESEL 0.005%	ILL. PAR.
GAUTENG PUMP PRICE (SA c/l) AS FROM 06/05/2020	1,222.000	1,202.000	-	-	-
WHOLESALE PRICE (SA c/l) AS FROM 06/05/2020	-	-	1,108.560	1,117.960	449.828
SINGLE NATIONAL MAXIMUM RETAIL PRICE	-	-	-	-	543.000
BASIC FUEL PRICE - 30/04/2020 (SA c/l)	317.579	305.504	310.617	317.072	179.195
PRESS RELEASE CONTRIBUTION TO BFP 30/04/2020 - 30/04/2020 (SA c/l)	448.770	438.770	518.630	523.030	468.128
UNIT OVER/(UNDER) RECOVERY - 30/04/2020 (SA c/l)	131.191	133.266	208.013	205.958	288.933
AVERAGE BASIC FUEL PRICE 30/04/2020 - 30/04/2020	317.579	305.504	310.617	317.072	179.195
AVERAGE UNIT OVER/(UNDER) RECOVERY 30/04/2020 - 30/04/2020	131.191	133.266	208.013	205.958	288.933

ANALYSIS MOVEMENT OF AVERAGE OVER/(UNDER) RECOVERY

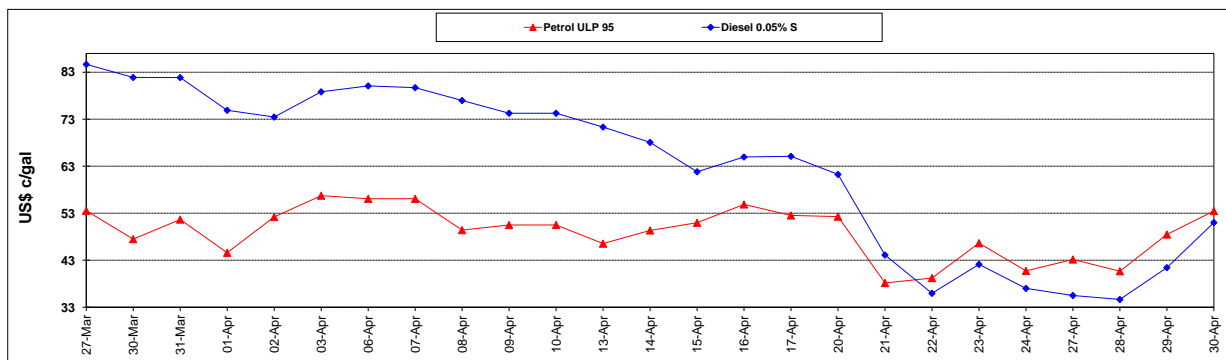
	PETROL 95	PETROL 93	DIESEL 0.05%	DIESEL 0.005%	ILL. PAR.
- MOVEMENT IN INTERNATIONAL PRODUCT PRICES	123.341	125.715	200.335	198.121	284.504
- MOVEMENT IN EXCHANGE RATE	7.850	7.551	7.678	7.837	4.429
AVERAGE UNIT OVER/(UNDER) RECOVERY 30/04/2020 - 30/04/2020	131.191	133.266	208.013	205.958	288.933

R/\$ EXCHANGE RATE - (R/\$18.0314 - 30/04/2020)

EXCHANGE RATE USED IN BASIC FUEL PRICE



INTERNATIONAL PRODUCT PRICES OF BASKET USED IN BASIC FUEL PRICE



BASIC FUEL PRICE IN SA CENTS PER LITRE

